

SW 2ND ST

CONST VALLEY GUTTER

FLUSH SW

PROPOSED TURFBLOCK(70' RIGHT OF WAY)
EMERGENCY ACCESS
ONLY

CONST RAISED SW

ADS MC-3500
STORM CHAMBER
SYSTEM
SEE NOTE #17

CONST CB-3
GRT EL 9.25

CONST 7.5-LF SW

4.5%
5% MAX

MATCH EXISTING
SW EL

CONST 2-LF
CURB CUTS
4 REQ'D

9.21*

RAISED SPEED HUMP
SIMILAR TO CITY DTL
309-1

9.06*

9.0*

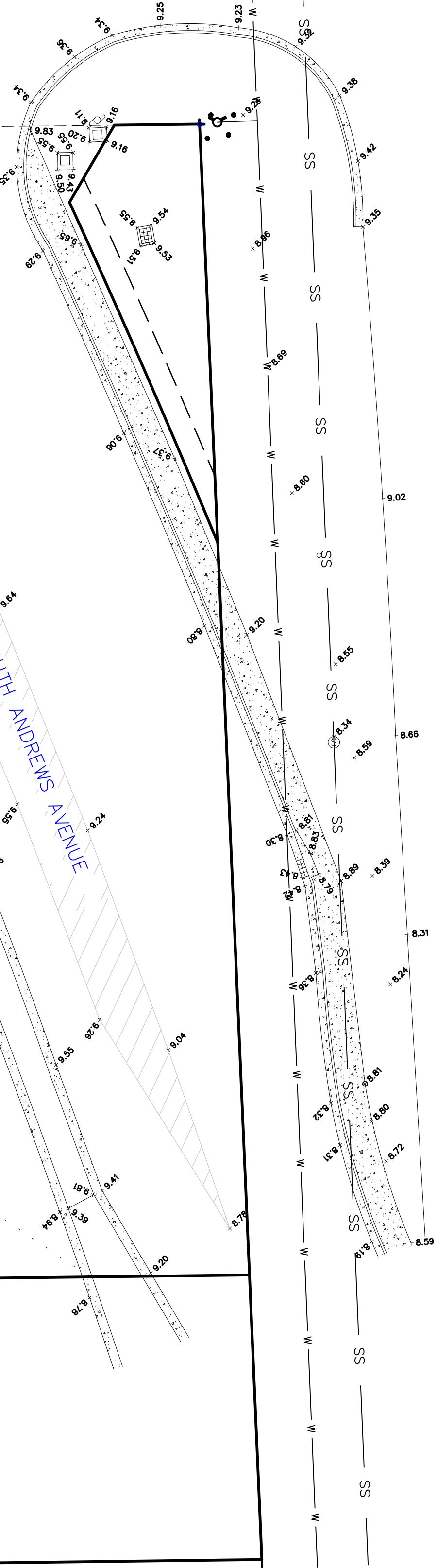
CONST YD-1
GRT EL 8.5
INV EL 6.5

CONST CB-2
GRT EL 9.25

CONST CB-1
GRT EL 9.25

CONST 60-LF 12" PVC
Ø0.2%

TOB EL 10.5



NOTES:

1. ACCESSIBLE ROUTES INCL SW'S, HANDICAP RAMPS & DET WARNINGS SHALL CONFORM TO 2010 US DOJ "STD'S FOR ACCESSIBLE DESIGN", FBC & FDOT DESIGN DESIGN STD'S INDEX #304.
2. CR-X MEANS HANDICAP RAMP PER FDOT DESIGN STD'S INDEX #522-002 CR-X.
3. ALL EXIST INFO & TOPO ARE PER ACCURATE LAND SURVEYORS, INC DWG # 1SU-15-0105 AND BASED ON NAVD 1988 DATUM.
4. GRT EL INLETS ARE THE LOWEST EOP ELEV. PAVT SHOULD BE 1/4" ABOVE INLET GRATE AND F-CURB.
5. ALL INLET GRATES SHALL BE USF HEAVY DUTY LOADING /AE.
6. THE FINAL LANDSCAPE GRADE AT BLDG SHALL BE 8" TYP, 4" MIN BELOW FIN FL ELEV.
7. CONTRACTOR SHALL PROTECT ALL INLETS & SITE PERIMETERS DURING CONSTRUCTION PER FLORIDA STORMWATER, EROSION, & SEDIMENTATION CONTROL INSPECTORS MANUAL.
8. CONTRACTOR SHALL COORD W/ UTILITIES TO ADJUST ALL EXIST UTILITY FACILITIES TO PROP GRADES INCL FPL, ATT, COMCAST, SID(WATER & SAN).
9. CONTRACTOR SHALL INSTALL FILTER FABRIC ON INLET GRATES ONCE THEY ARE CONSTRUCTED AND SHALL NOT BE REMOVED UNTIL ALL LANDSCAPING HAS BEEN INSTALLED PER FLORIDA STORMWATER EROSION AND SEDIMENTATION CONTROL MANUAL.
10. ALL LANDSCAPE IN THE VICINITY OF DRAINAGE PIPE SHALL HAVE ROOT BARRIERS INSTALLED.
11. CONTRACTOR TO VERIFY WITH MEP ON INVERT FOR RWLS ON WEST SIDE OF BUILDING, IF DESIGNED..
12. ALL PVC RWL/YARD DRAINAGE SHALL BE SDR-26 PVC.
13. ALL SIDEWALK SHALL ADHERE TO CROSS SLOPES NOT TO EXCEED 1.5% AND LONGITUDINAL SLOPES TO BE UNDER 5%, EXCEPT IN CASES WHERE HANDRAILS ARE SHOWN.
14. THE MC-3500 STORMCHAMBER SYSTEM IS DESIGNED FOR 16,279 CF OF STORAGE. THE ADS DRAWING IS BEING DESIGNED AND WILL BE PLACED INTO THE CIVIL DRAWING ONCE COMPLETED. THE SHADED AREA IS THE MAX LAYOUT FOR THE CHAMBER SYSTEM

ADS STORMCHAMBER DESIGN:

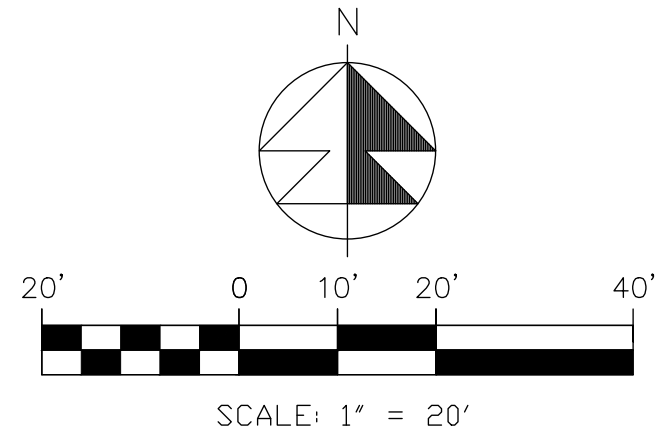
ELEVATIONS IN NAVD 1988:
BOTTOM OF STONE: 1.5
UNDERDRAIN INVERT: 1.5
BOTTOM OF MC-3500 CHAMBER: 2.25
18"x18" BOTTOM MANIFOLD INVERT: 2.4
24" ISOLATOR ROW PLUS INVERT: 2.42
TOP OF MC-3500 CHAMBER: 6.0
TOP OF STONE: 7.0
MINIMUM ALLOWABLE GRADE FOR 2" FLEXIBLE PVT: 7.7
PROPOSED MINIMUM GRADE FOR FLEXIBLE PVT PAVEMENT: 9.25

AERIAL



VICINITY MAP

SECTION 2 TOWNSHIP 49S RANGE 42E
Permit Set, Not for Construction/Bidding



LEGEND

000.0	PROP PAVT EL
00.0	PROP CONC SW EL
00.0	EXIST EL
00.0	CONTRACTOR TO FIELD VERIFY
00.0	INVERT EL
00.0	CATCH BASIN
00.0	YARD DRAIN
00.0	BOTTOM EL
00.0	TOP EL
00.0	EXF
00.0	WATER MAIN
00.0	WATER SERVICE
00.0	SANITARY SERVICE
00.0	FORCE MAIN
00.0	FIRE MAIN
00.0	UNDERGROUND WIRE
00.0	STORM LINE
00.0	WASTEWATER GRAVITY
00.0	FIRE HYDRANT
00.0	POST INDICATOR VALVE
00.0	GATE VALVE
00.0	TAPPING VALVE
00.0	VALVE
00.0	FIRE DEPT CONNECTION
00.0	CV CHECK VALVE
00.0	DCDA-DBL OHK DETECTOR ASSEMBLY
00.0	RPDA-REDUCED PRESS DET ASSEMBLY
00.0	WATER METER W/ REDUCED PRESSURE BACKFLOW PREV
00.0	SAMPLE POINT
00.0	MITERED END SECTION
00.0	FIN FLOOR ELEV
00.0	FLOW LINE ELEV
00.0	TOB
00.0	TOP OF BANK
00.0	TOP OF SLOPE
00.0	TOP OF CONCRETE
00.0	TOP OF PAVERS
00.0	UTILITY EASEMENT
00.0	DRAINAGE EASEMENT
00.0	LINE MAINTENANCE EASMT
00.0	LIMITED ACCESS EASMT
00.0	CLEANOUT
00.0	BORING NO. AND LOCATION
00.0	ELLIPTICAL RCP
00.0	REINFORCED CONC PIPE
00.0	CORRUGATED ALUMINUM PIPE
00.0	HDPPE
00.0	POLYVINYL PIPE
00.0	CORRUGATED METAL PIPE
00.0	PROP CONC EL

48 HOURS BEFORE DIGGING
CALL TOLL FREE
811
CALL SUNSHINE
NOTIFICATION CENTER

REVISIONS

10/14/24 REV PER SP-DRC
12/19/24 REV PER SP-DRC

Jeff H. Iravani, Inc.
Consulting Engineers

1934 COMMERCE LANE, SUITE 5
JUPITER, FLORIDA 33458
TEL: (561) 575-6030
FAX: (561) 575-6088
www.JHinc.com

201 SW 12th Ave

Pompano Beach, Florida

Grading, Paving & Drainage
Plan

DATE	SCALE	DESIGNED BY	DRAWN BY	JOB NO.
08/05/2022	1"=20'	JBI	JBI	2208-1411

SEAL

CDA # 6986
SHEET NO.
C-3

AAC

PZ22-12000026

12/23/2024